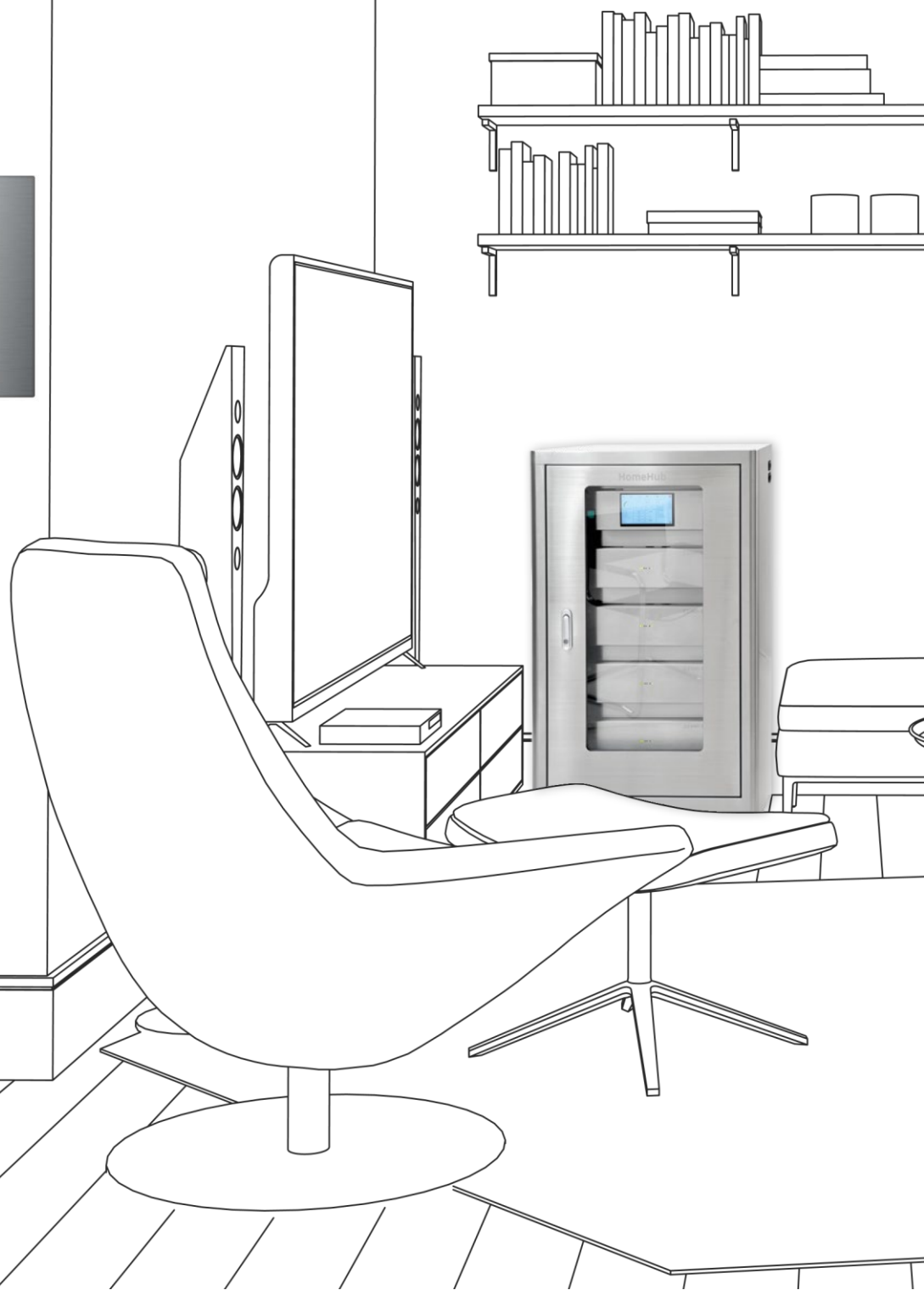


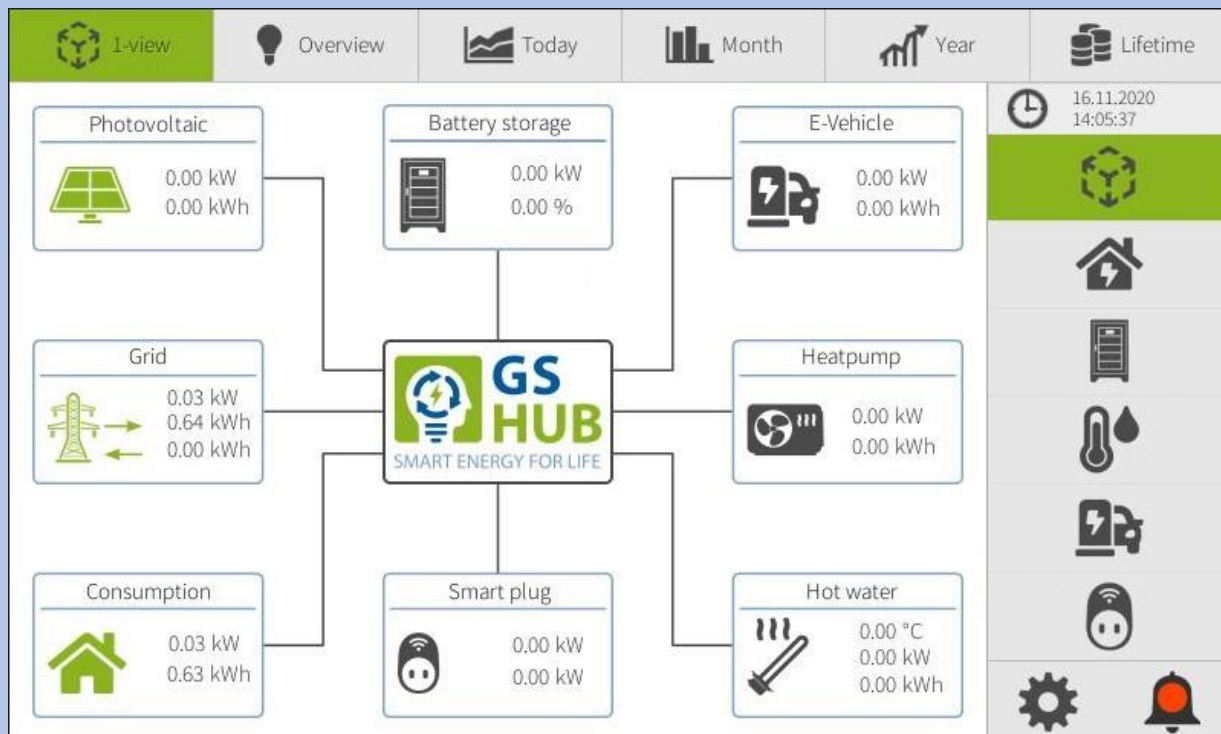
EMS - Energy Management System

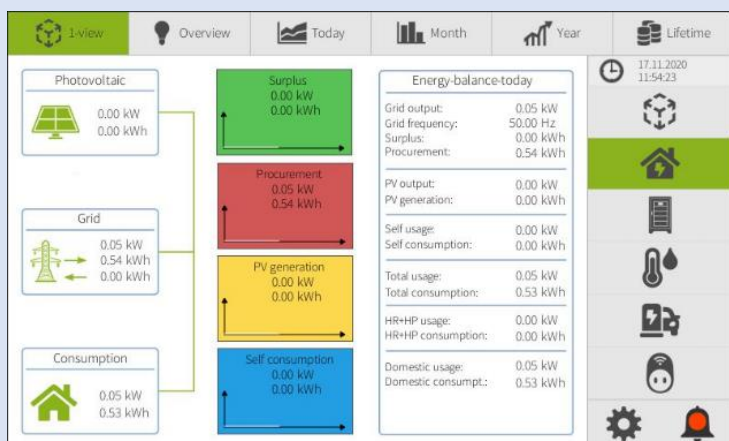
Control your energy flow.



The Energy Management System (EMS) allows to monitor the energy flow, the energy production and the energy consumption. The EMS screen displays exactly where the power is coming from and where it is used. You have control over all your different devices that need to be provided with energy and you can see detailed information about each single component.

- **Photovoltaic**
- **Grid**
- **House Consumption**
- **Battery Storage**
- **Smart Plug**
- **E-Vehicle**
- **Heatpump**
- **Hot Water**



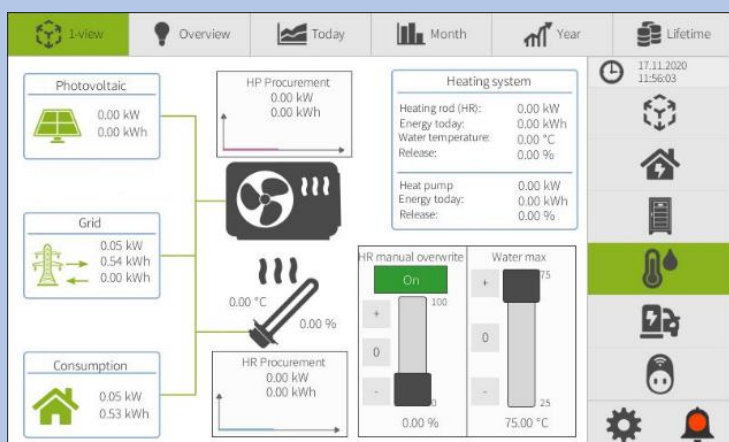
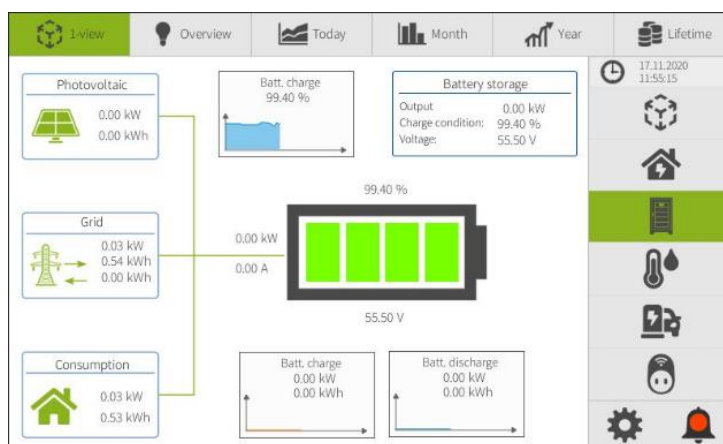


Energy Balance Today

Have a closer look at your energy balance while having all information of the Grid, PV, self-consumption & domestic usage in one chart.

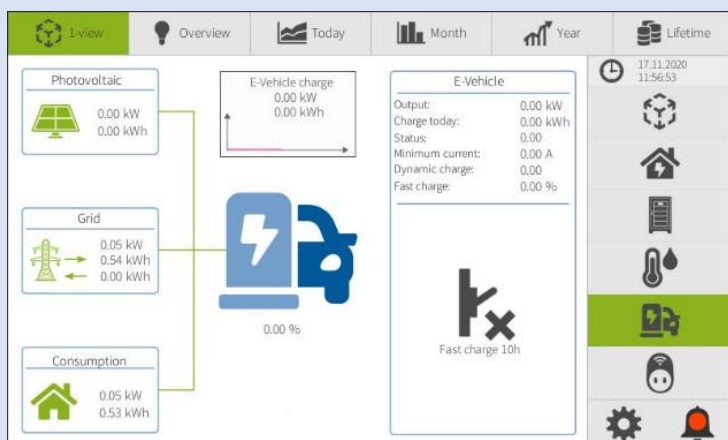
Battery

Find detailed information about your Battery status and its energy flow, including your PV, the grid and your consumption.



Heating System

Implement your heating system into your smart energy home & set it to your personal preference.

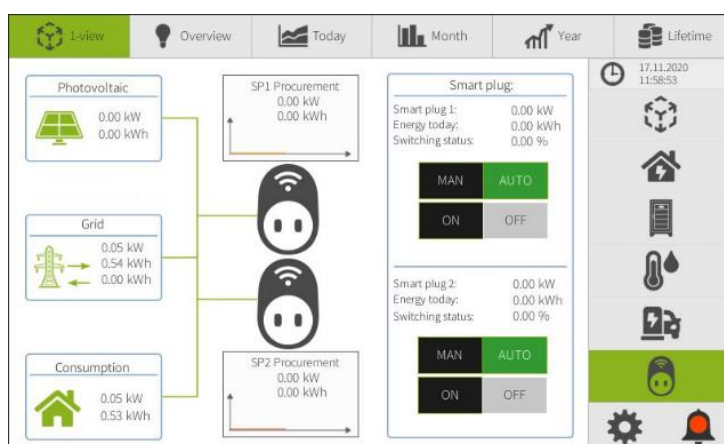


E-Vehicle

Charge your E-Vehicle with solar power. Activate fast charging to be back on the road in no time.

Smart Plugs

Use the smart plugs to connect your most important devices that you want to operate with solar energy.



To round up the perfect monitoring with an overview of your long-term power use, the EMS will collect your data in charts to have an easy overview about your daily, monthly or yearly use. You can also choose, which components you want to monitor.